

# General Description

## CONTROL SYSTEMS

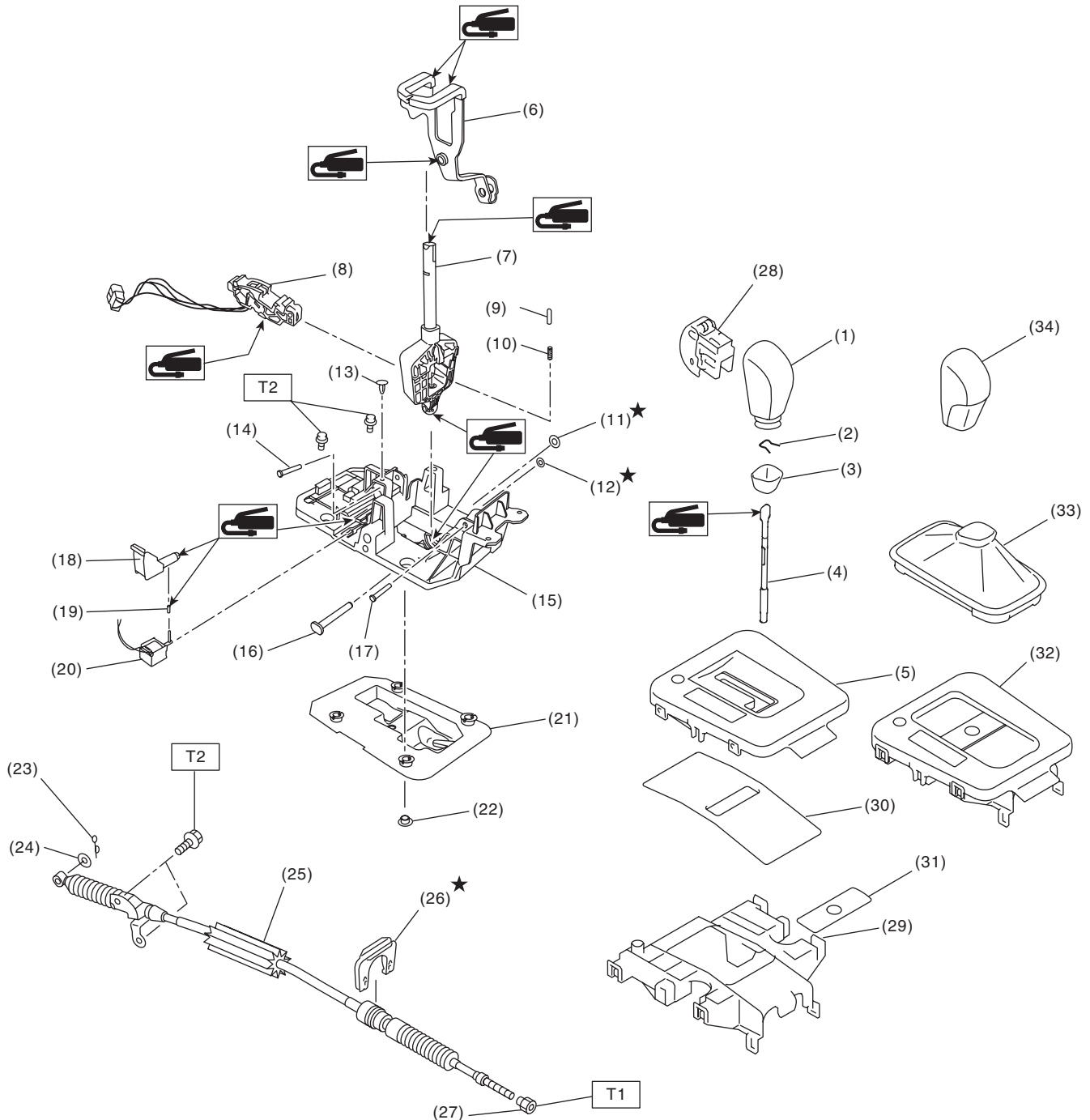
### 1. General Description

#### A: SPECIFICATION

Item		Specifications
Swing torque of rod against lever	N (kgf, lb)	3.7 (0.38, 0.83) or less

#### B: COMPONENT

##### 1. AT SELECT LEVER



# General Description

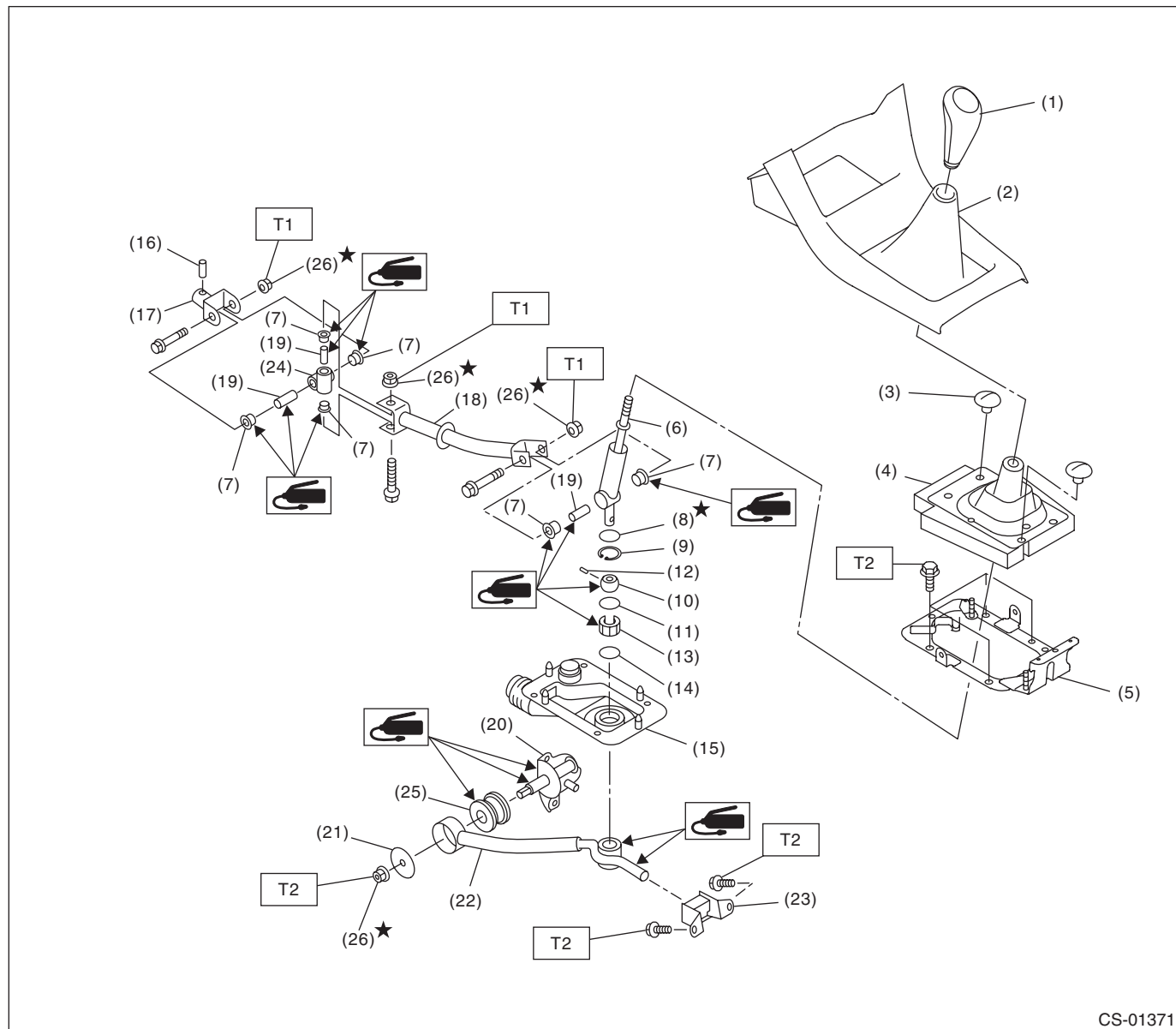
## CONTROL SYSTEMS

(1) Grip sub ASSY (model with gate shifter)	(14) Spacer pin guide	(27) Nut
(2) Clamp grip pin	(15) Plate COMPL	(28) Button ASSY-AT
(3) Cover grip AT (model with gate shifter)	(16) Shaft control	(29) Housing
(4) Rod COMPL	(17) Spacer pin guide	(30) Blind A (model with gate shifter)
(5) Indicator cover (model with gate shifter)	(18) Rod shift lock	(31) Blind B (model with gate shifter)
(6) Arm COMPL	(19) Cushion solenoid	(32) Indicator assembly (model with boot shifter)
(7) Select lever COMPL	(20) Solenoid unit	(33) Boot ASSY (model with boot shifter)
(8) Plate guide	(21) Gasket	(34) Grip sub ASSY (model with boot shifter)
(9) Rod detent	(22) Spacer plate	
(10) Detent spring	(23) Snap pin	<b><i>Tightening torque: N·m (kgf-m, ft-lb)</i></b>
(11) Clamp push nut	(24) Washer	<b><i>T1: 7.5 (0.8, 5.5)</i></b>
(12) Clamp push nut	(25) Select cable	<b><i>T2: 18 (1.8, 13.3)</i></b>
(13) Clamp pin	(26) Clamp	

# General Description

## CONTROL SYSTEMS

### 2. 5MT GEAR SHIFT LEVER



CS-01371

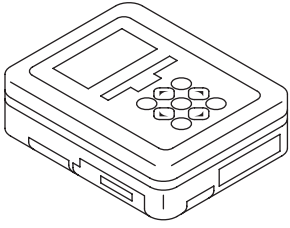
- |                              |                    |                       |
|------------------------------|--------------------|-----------------------|
| (1) Gear shift knob          | (11) O-ring        | (21) Plate            |
| (2) Console front cover ASSY | (12) Spring pin    | (22) Stay             |
| (3) Clamp                    | (13) Bushing B     | (23) Cushion rubber   |
| (4) Boot and insulator ASSY  | (14) O-ring        | (24) Boss             |
| (5) Plate COMPL              | (15) Boot          | (25) Bushing          |
| (6) Lever                    | (16) Spring pin    | (26) Self-locking nut |
| (7) Bushing                  | (17) Joint         |                       |
| (8) Lock wire                | (18) Rod           |                       |
| (9) Snap ring                | (19) Spacer        |                       |
| (10) Bushing                 | (20) Shift bracket |                       |

**Tightening torque: N·m (kgf-m, ft-lb)**

**T1: 12 (1.2, 8.9)**

**T2: 18 (1.8, 13.3)**

**C: PREPARATION TOOL****1. SPECIAL TOOL**

ILLUSTRATION	TOOL NUMBER	DESCRIPTION	REMARKS
 <p>ST1B022XU0</p>	1B022XU0	SUBARU SELECT MONITOR III KIT	<p>Used for setting of each function and trouble-shooting for electrical system.</p> <p>NOTE: For detailed operation procedures of Subaru Select Monitor III, refer to "PC application help for Subaru Select Monitor".</p>

**2. GENERAL TOOL**

TOOL NAME	REMARKS
Circuit tester	Used for measuring resistance and voltage.

**D: CAUTION**

- Wear appropriate work clothing, including a cap, protective goggles and protective shoes when performing any work.
- Remove contamination including dirt and corrosion before removal, installation or disassembly.
- Keep the disassembled parts in order and protect them from dust and dirt.
- Before removal, installation or disassembly, be sure to clarify the failure. Avoid unnecessary removal, installation, disassembly and replacement.
- Use SUBARU genuine fluid, grease etc. or equivalent. Do not mix fluid, grease, etc. of different grades or manufacturers.
- Be sure to tighten fasteners including bolts and nuts to the specified torque.
- Place shop jacks or rigid racks at the specified points.
- Apply grease onto sliding or revolving surfaces before installation.
- Before installing O-rings or snap rings, apply sufficient amount of fluid to avoid damage and deformation.
- Before securing a part in a vise, place cushioning material such as wood blocks, aluminum plate or cloth between the part and the vise.
- Before disconnecting electrical connectors, be sure to disconnect the negative terminal from battery.